

PLANORA



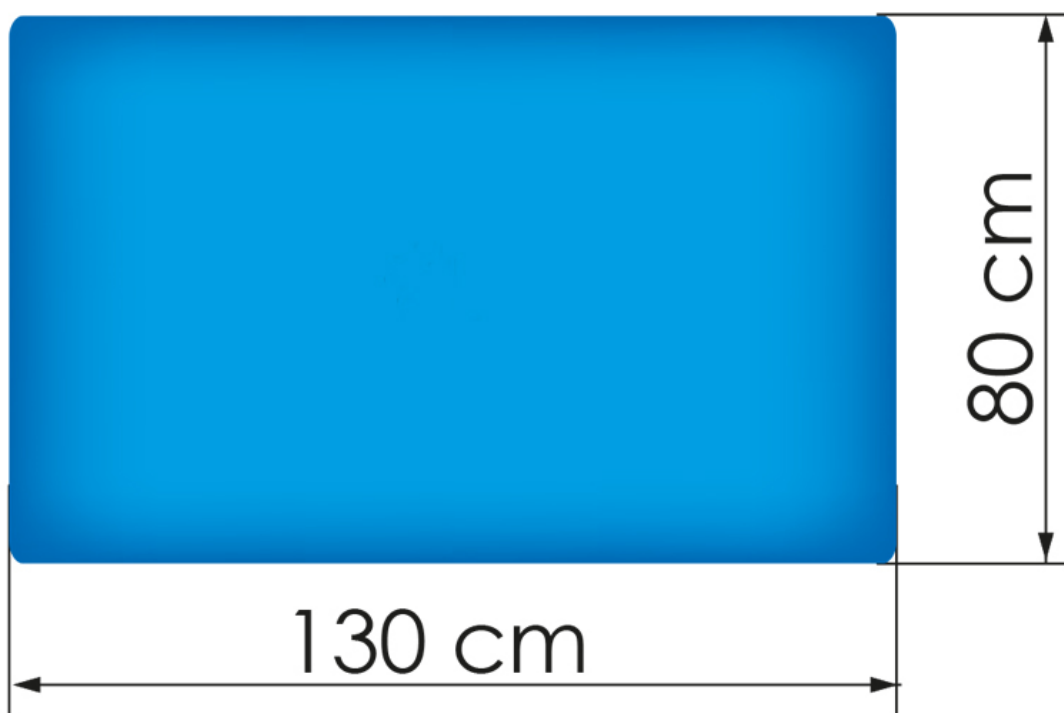
Rectangular vacuum board with surface heating and height adjustment.

Product codes: 2158, 2159

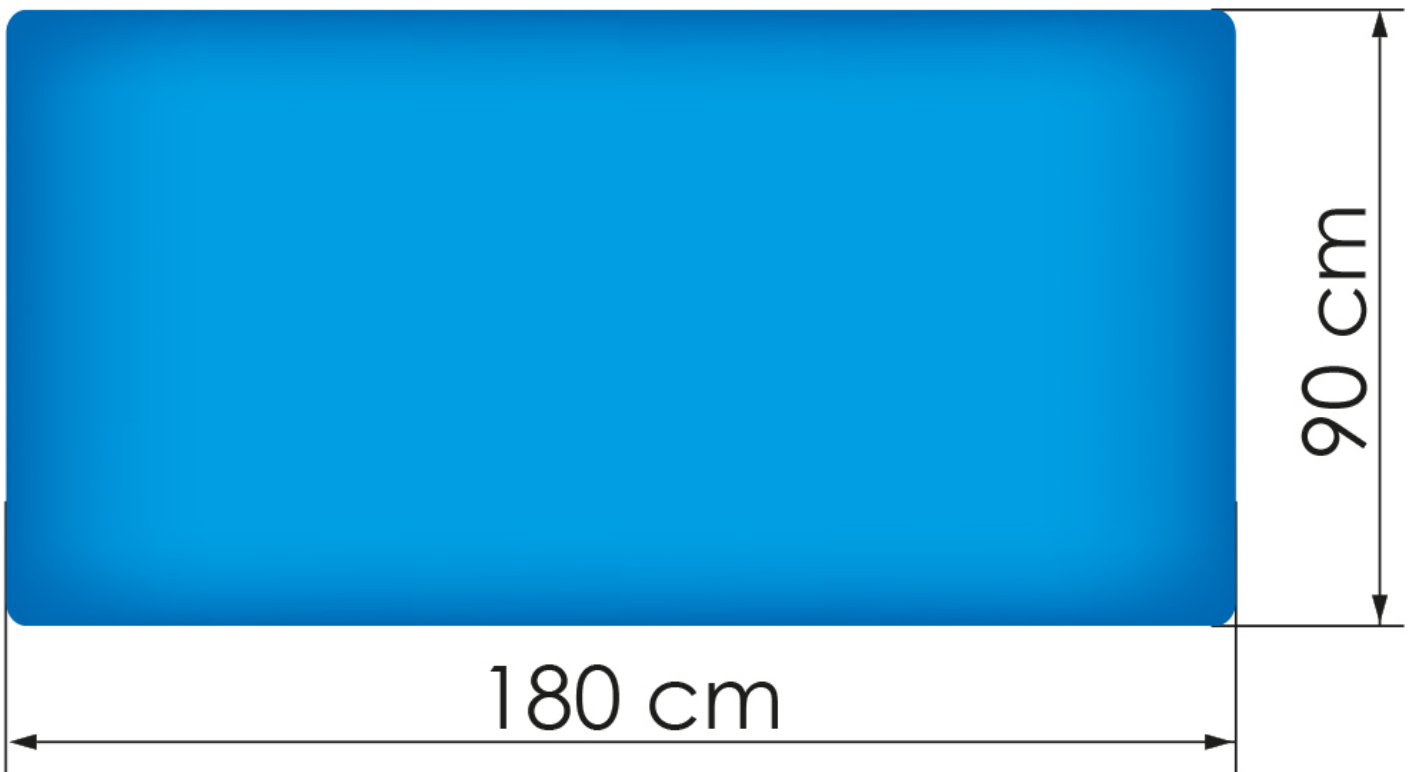
DESCRIZIONE: Rectangular vacuum board for professional use. With surface heating and height adjustment.

- Manual height adjustment.
- Assisted height regulation.
- Temperature adjustment.
- Cover pad and HR3 fabric.
- Up to two swing arms with two different cold or heated bucks chosen from our wide range (only on model 2158).
- Enhanced three phase motor.

Available shape



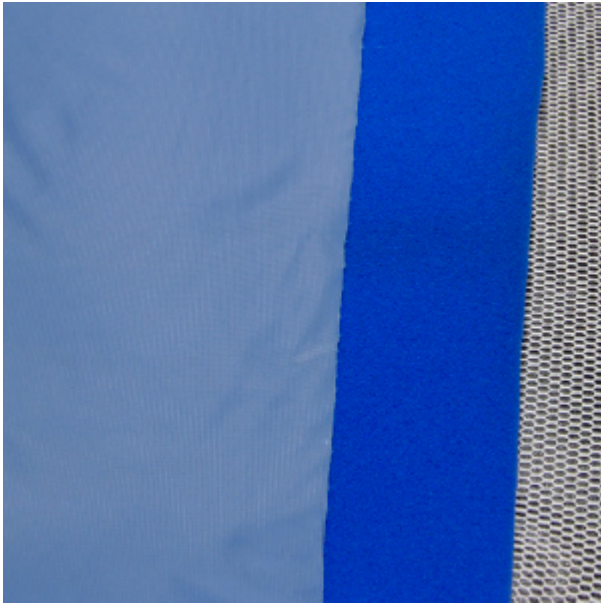
Rectangular shape 130x80 (mod. 2158)



Rectangular shape 180x90 (mod. 2159)

|

OPTIONS

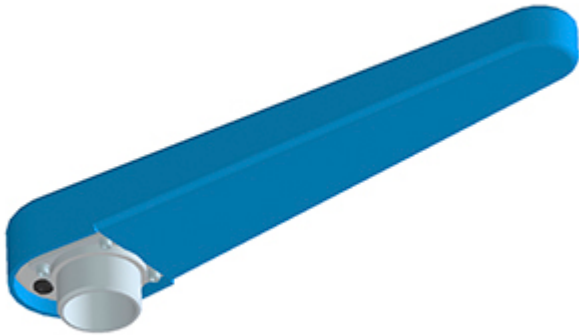


blue polyether foam padding and DEK fabric (only on model 2158)



Steam electric iron with mat

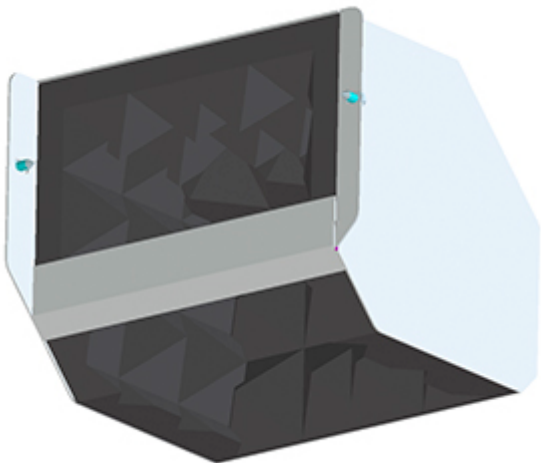
[FIND OUT MORE](#)



Up to two swing arms with two different cold or heated bucks chosen from our wide range (only on model 2158)



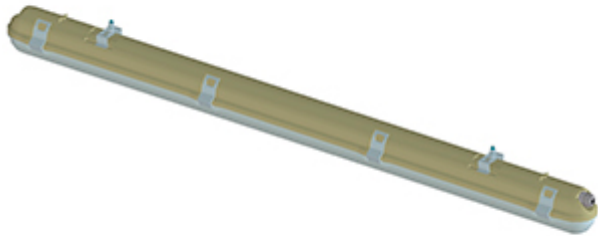
Soundproofed chimney (only on model 2158)



Silencer (only on model 2158)



Lamp support and lateral balancer (only on model 2158)



Lamp (only on model 2158)



Rail with iron conveyor (only on model 2158)



Lamp with side stand and rail with iron conveyor (only on model 2158)

TECHNICAL SPECIFICATIONS

	2158	2159
Description	Rectangular vacuum with surface heating and height adjustment – cm 130×80	Rectangular vacuum with surface heating and height adjustment – cm 180×90
Electrical requirements	230V 50Hz 110-220V 60Hz	230V 50Hz 110-220V 60Hz
Total power	1,43 kW	1,55 kW
Suction power	0,55 kW 0,74 HP	0,55 kW 0,74 HP
Surface heating	0,44 kW x2 (//)	1000 kW x4 (2 s. x 2 //)
Steam consumption	2,72 kg/h 6 lbs/h (in the presence of iron)	2,72 kg/h 6 lbs/h (in the presence of iron)
Footprint	910 x 460 mm 36" x 18"	910 x 460 mm 36" x 18"
Dimensions	1510 x 800 x 750-930 mm 59" x 31" x 30"-37"	2000 x 900 x 760-940 mm 79" x 35" x 30"-37"
Net weight	87 kg 192 lbs	100 kg 220 lbs